

Assembly and Operating Manual

WAGNER

WAGNER

WAGNER

Automatic Powder Spray Gun for Enamel-Use



DANGER

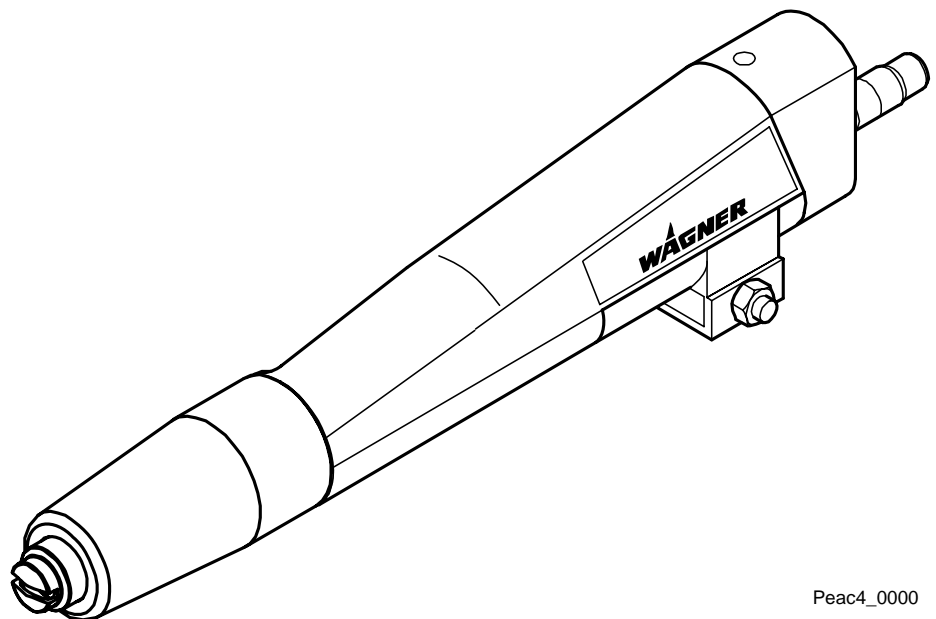


High Voltage!
Turn power off
before servicing!



CAUTION

Read rules for safe
operation and
instructions
carefully!



Peac4_0000



0390819

PEA-C4-HiCoat



WAGNER

WAGNER

WAGNER

WAGNER

WAGNER

Table of contents	Page
1. General description.....	4
1.1 Buildup powder spray gun PEA-C4-HiCoat (Enamel)	4
1.2 Technical data	5
2. Safety regulations	6
2.1 Safety hints.....	6
2.2 EU Declaration of conformity.....	9
3. Preparing the spray gun	10
3.1 Selection of the suitable nozzle system	10
3.2 Connecting the spray gun	10
3.3 Grounding.....	11
3.4 Reproducible setting of the nozzle position.....	12
4. Working with the spray guns	13
4.1 Optimizing the spray pattern for your coating.....	13
4.2 Switching off the spray gun	13
4.3 Performing a color change	14
5. Maintenance and cleaning.....	15
5.1 Replacing the spray gun.....	15
5.2 Cleaning the spray gun and replacing the wearing parts	17
5.3 C4 Enamel Powder tube assembly instructions	17
5.4 Disposal.....	18
6. Rectification of malfunctions	19
7. Warranty.....	20
8. Scope of delivery and spare parts lists.....	21
8.1 How to order spare parts.....	21
8.2 Scope of delivery and spare parts spray gun PEA-C4-HiCoat (Enamel)	22
9. Accessories	23
9.1 Electrical cables and hoses.....	23
9.2 Spray gun mounting and fastening.....	23
9.3 Fan spray nozzle	23

This manual contains information and hints for the service, repair and maintenance of the equipment. The user must obey all the rules of operation found in this manual; failure to do so will render the warranty invalid.

Wagner powder systems are designed to meet the most stringent safety requirements. They can be operated in compliance with generally applicable safety codes and applicable national safety regulations.

Please pay particular attention to the parts marked by the following symbols. Follow the instructions exactly, in the interests of both your own safety and the correct functioning of the unit.



Warning

This symbol draws attention to the fact that if the operating instructions, working instructions, prescribed working sequences etc. are not followed exactly, this can lead to injury or even fatal accidents.



Caution

This symbol indicates that failure to follow the operating instructions, working instructions, prescribed working sequences etc. exactly can lead to material damage.



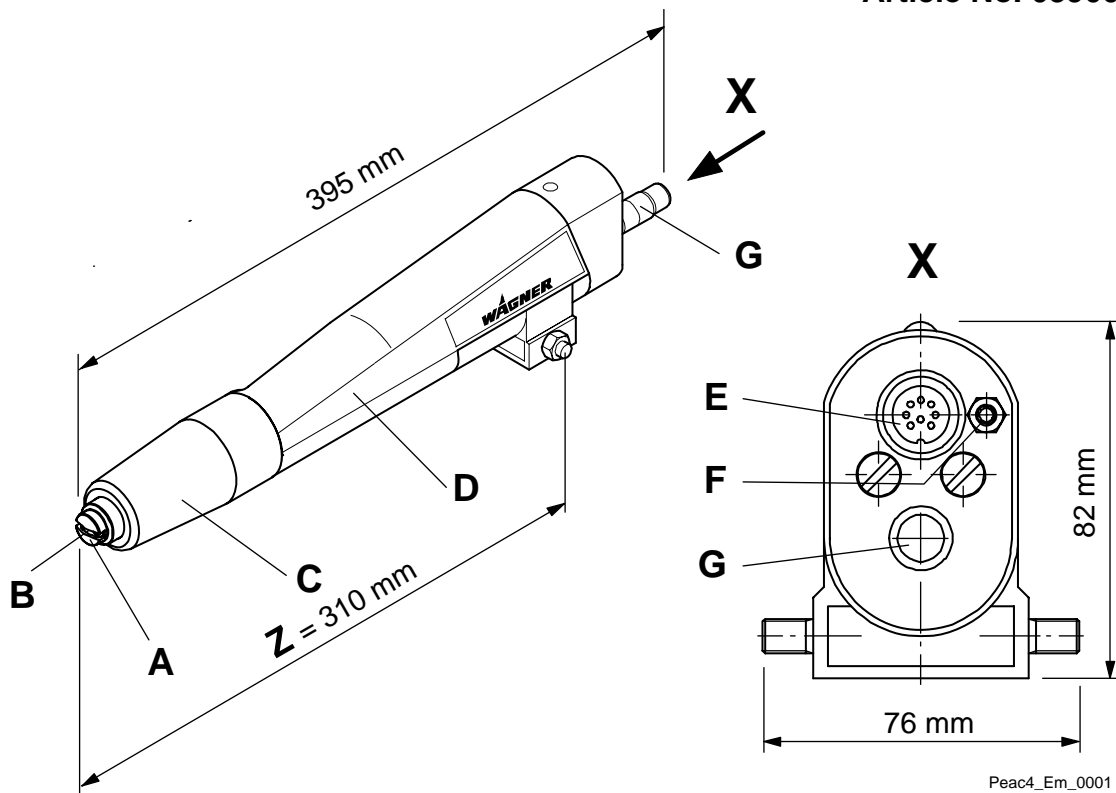
Hint

This symbol draws your attention to useful additional information and tips. Failure to observe these instructions can cause malfunctions.

1. General description

1.1 Buildup powder spray gun PEA-C4-HiCoat (Enamel)

Article No. 0390011



Peac4_Em_0001

- A Fan spray nozzle
- B Electrode
- C Outer nut
- D Spray gun body

- E Electrical connection
- F Atomizing air connection
- G Powder hose connection
- Z Assembly dimension on the reciprocator

00_Peac4_Em_Anwendung.doc

The Corona automatic spray gun may only be used for conventional types of Enamel powder that can be electrostatically charged.

The spray gun is used for industrial powder coating in **automatic plants** and can be operated with **individual control units** or with **control cabinet modules**.



Caution

The operator **must** ensure that the spray gun is only connected to **Wagner** devices!
 The distance of the installed spray guns to each other **must be at least 300 mm**.
 High room temperatures and, in particular, laying hoses in areas exposed to sunlight in factory buildings **must** be avoided!
 To secure the spray guns, the "spray guns" control cabinet **must** be switched off!

1.2 Technical data

06_.doc

Electrical:

Input voltage:	max. 22 Vpp
Input current:	max. 0.9 A
Frequency:	19 ... 30 kHz
Output voltage:	max. 100 kV DC
Polarity:	negative
Design:	as per EN 50177
Protection class:	IP 54

Pneumatic:

Input air pressure (atomizing air):	max. 43.5 psi (3 bar)
Powder output quantity:	max. 450 g/min

06_.doc

Required compressed air quality:

Quality class	Compressed air quality according to ISO 8573.1	
5	Max. residual water: (pressure dew point in °F at 100 psi / °C at 700 kPa)	+44.6 °F / +7 °C
2	Max. oil contents:	0.1 mg oil/m ³ / 0.1 oz/ft ³
3	Max. concentration:	5 mg/m ³ / 5 oz/ft ³
3	Max. particle size:	5 µm / 5 microns

Ambient conditions:

If low temperature powders are used, the ambient temperature may have to be lower than 86 °F (30 °C).



Volume measures:

For volumes, specified in Nm³ (standard cubic meters). One cubic meter of a gas at 32 °F (0 °C) and 1.013 bar is called norm cubic meter.

1 Nm³/h = 35.3 ft³/h; 1 bar = 14.504 psi

2. Safety regulations

2.1 Safety hints

010101_Sicherheit01_pea_em.doc



Warning

This equipment can be dangerous if it is not operated in accordance with this operating manual!

There might be additional regulations to be observed, put into effect by governmental, state or other official agencies or local security (fire) departments!



Warning

Under no circumstance may persons with a cardiac pacemaker come close to the area between the tip of the spray gun and the work piece to be coated!

The following rules must be observed in order to ensure a safe and efficient use of the equipment:

- The user has to observe particularly the safety guidelines of the VdS, the local professional and security institutions.
- The electrostatic coating equipment may only be operated by trained and qualified personnel.
- The spray gun may only be operated in powder coating booths or on powder coating stands that are equipped with a ventilation system.
- Over sprayed powder must be reliably collected.
- Adhere to the instructions given by the manufacturers and to the prevalent local laws on the environment when disposing of waste coating powder.
- The main power connection for operation of the Wagner powder equipment **must** be electrically interlocked with the exhaust system of the powder coating booth.
- In the event of faults or defects, repair work is to be performed at the user's discretion.
- Repairs may only be carried out by trained technicians.
- The work area must have an electrostatically conductive floor. (measured in accordance with EN 1081)
- All conductive parts in the work area must be electrostatically grounded. (work area = 1 m around every spray location or opening in the booth)
- All persons inside the work area must wear electrostatically conductive footwear.
- Spray guns should be operated with bare hands! If gloves are used they **must** be made of conductive material.

- **Wear suitable work clothing**
- **Use breathing protection or a visor for work which produces powder and when developing solvent steams:**

Avoid health dangers by inhalation and skin contacts of solvent steams and lacquer aerosols; Cornea injuries by splashes in the eye.

- **Check the equipment for damage**

Before operating the system, check if slightly damaged parts still function correctly. Check whether the moving parts operate properly, whether they jam and whether parts are damaged.

Damaged parts should be repaired or replaced by a Wagner customer service.



Warning


For your own safety, use only accessories and equipment listed in the operating manual. The use of individual parts other than those recommended in the operating manual may create a hazard to personal safety.

Use only original Wagner replacement parts!

Alteration or repair of Wagner original spare parts may cause fatal accidents in the coating system!

HAZARD	PREVENTION
<p>Electrostatic arcing may cause an explosion or fire. Mixtures of powder and air can explode or ignite causing property damage and/or severe injury.</p>	<ul style="list-style-type: none"> • Operator must be grounded. Grounding straps must be used when wearing rubber soled shoes. • Operator must remove all metallic objects from his or her person, which are not grounded. • The object being sprayed must be grounded. • All metallic objects within the spray area must be grounded (including spray booth, part hangers, fire extinguishers, etc.) • Grounded conductive floor must be provided in spray area. • Turn off the Power Pack and unplug from outlet before flushing out the gun, cleaning or replacing parts on the gun such as changing tips.
<p>Explosion or fire. Mixtures of powder and air can explode or ignite causing property damage and/or severe injury.</p>	<ul style="list-style-type: none"> • Exhaust and fresh air introduction must be provided to keep the air within the spray area free of accumulation of flammable atmosphere. • Smoking must not be allowed in spray area. • Fire extinguishing equipment must be present and in working order. • Electrostatic arcing must be prevented. (See Electrostatic arcing) • When cleaning the system, use only materials recommended by the coatings manufacturer. Be sure Power Pack is turned off and unplugged. • Avoid all ignition sources such as static electricity sparks, open flames such as pilot lights, hot objects such as cigarettes and sparks from connecting and disconnecting power cords and working light switches. • To prevent hazardous concentrations of flammable atmospheres, spray only in a properly ventilated spray booth. • Never operate spray gun unless ventilation fans are operating properly. • Check and follow all National, State and Local codes regarding air exhaust velocity requirements. • Ventilation must be maintained during the cleaning operation.
<p>Toxic Substances: Some materials may be harmful if swallowed or come in contact with the skin.</p>	<ul style="list-style-type: none"> • Follow the requirements of the Material Safety Data Sheet supplied by the coatings manufacturer. • Exhaust and fresh air introduction must be provided within the spray area to keep the air free of high powder accumulations. • Wear a mask or respirator. Read all instructions for the mask to insure that it will provide the necessary protection against the inhalation of powder.
<p>General</p>	<ul style="list-style-type: none"> • Read all instructions and safety precautions before operating. • Comply with all appropriate local, state and national codes governing ventilation, fire prevention, and operation of Electrostatic equipment usage. • The United States Government Safety Standards have been adopted under the Occupational Safety and Health Act. These standards, particularly the General Standards, Part 1910 and the Construction Standard, Part 1926, should be consulted. • NFPA Standard No. 33 is to be followed when setting up your spray area. Contact the National Fire Protection Association, Batterymarch Park, Quincy, Massachusetts, 02269 for more information. • Check with insurance company for additional requirements. • Use only identical replacement parts. • Personnel must be given training in accordance with the requirements of NFPA Standard No. 33 chapter 18. • It is the duty of all personnel responsible for the spray equipment operation and maintenance to read and understand all safety information furnished with this equipment.

2.2 EU Declaration of conformity

 Wagner hereby declares that the unit described in these operating instructions has been designed and manufactured according to the relevant regulations:

- 89/336 EEC (Electro-magnetic compatibility)

The following **European standards** were applied:

DIN EN 61000-4-1

DIN EN 61000-4-2

DIN EN 61000-4-3


DIN EN 61000-4-4

The product includes an **EU declaration of conformity**. This can be ordered again if necessary from your WAGNER dealer by giving details of the product and serial number involved.

The EU declaration of conformity has the number **0390 819**.

3. Preparing the spray gun

3.1 Selection of the suitable nozzle system

Nozzle	Overview Application	Spray Pattern
Fan spray nozzle 	Difficult workpieces: <ul style="list-style-type: none"> • Undercuts • Profiles • Flat workpieces (reduced picture frame) 	Widely spread flat powder cloud

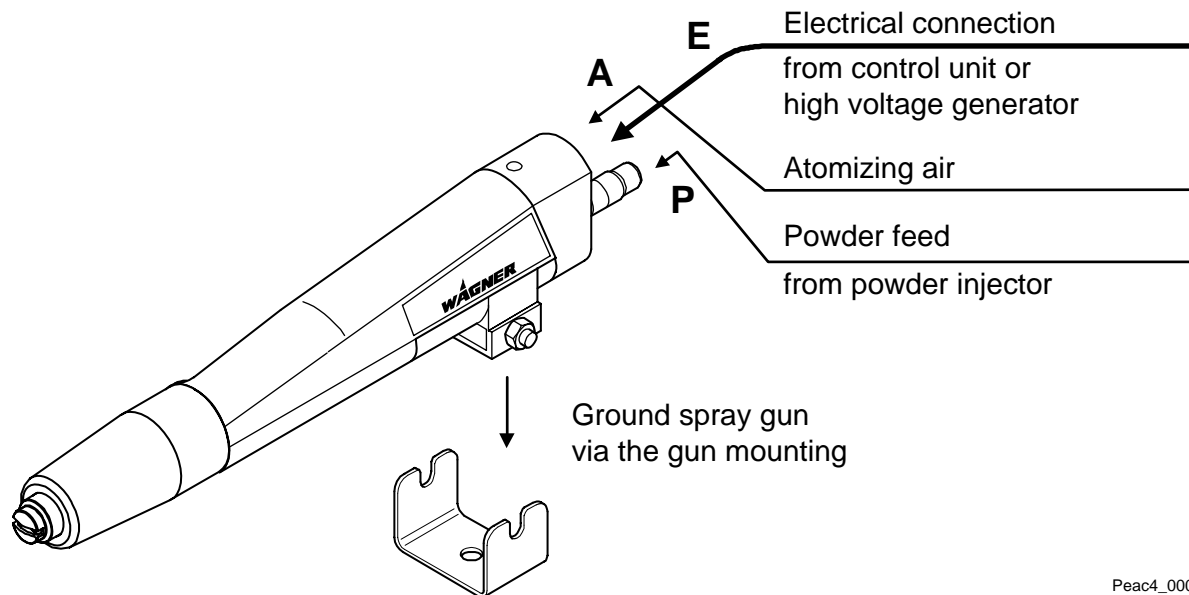
3.2 Connecting the spray gun

Before connecting the gun to the system, switch off the high voltage generator. For information on this activity refer to the related operating instructions for the control units and control modules.



Hint

Use the parts listed in chapter "[Accessories](#)" for connecting and fastening the spray gun.



Peac4_0003

**Caution**

The distance of the installed spray guns to each other **must be at least 300 mm**.

- Fit the spray gun to the hanger and fasten both, for example, to the gun mounting on the reciprocator.
- Connect the spray gun to the high voltage generator using the electrical cable **E**.
- Connect the hose for the powder feed **P** to the spray gun.
- Connect the hose for the atomizing air **A** to the spray gun.

**Hint**

Using a Wagner powder injector and a suitable control unit, it is possible to automatically blow out or purge the angled spray gun each time prior to switch off.

3.3 Grounding

For safety reasons, the **spray gun must** be properly grounded. This occurs through the gun mounting.

0203_.doc

Good grounding of the **workpiece** is also necessary for optimum powder coating.

A poorly grounded workpiece causes:

- dangerous electric charging of the workpiece
- back-spray onto spray gun and user
- uneven coating
- very bad wrap around

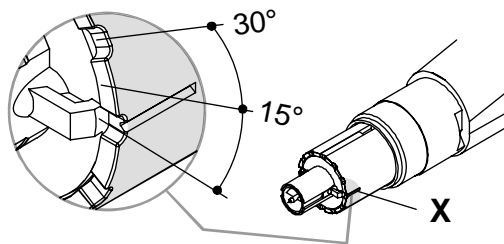
**Warning**

Sparks between workpiece and conveyor hooks (hangers) can occur if hooks or other hanger parts are not completely cleaned!

These sparks can cause heavy radio frequency interference.

3.4 Reproducible setting of the nozzle position

0205_Einstellg_duesenposit_em.doc



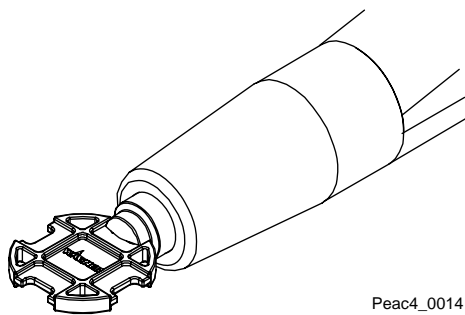
peac4_em_0015

- For a horizontal powder cloud, the **fan spray nozzle** is set where the protective wedge is in the 0° position.

It is possible to set it other positions for special applications.

On the nozzle body and electrode holders there are **X** markings. In 15° steps, the position can be changed if necessary and reproducibly.

The outer nut has to be removed for exact positioning.



Peac4_0014

An **adjustment tool** is provided for the **fan spray nozzle**.

It permits turning the fan spray nozzle **without damaging the electrodes** and without removing the outer nut.

The outer nut only has to be slackened.

4. Working with the spray guns

4.1 Optimizing the spray pattern for your coating

0301_Pulverwolke_peac_em.doc

- Switch on the high voltage generator and the powder feed.



Caution

To minimize the wear on the wearing parts, the total feed air and dosage air **should be** under **5 Nm³/h**

Permitted values for atomizing air settings when using fan spray nozzles:

- **Standard setting 0.1 Nm³/h**
- **If required, up to a maximum of 0.3 Nm³/h**

- Adjust the powder quantity and the powder speed on a test piece.

4.2 Switching off the spray gun

0312_Ausschalten_peac.doc

The spray gun is switched off differently depending on the type of powder injector. In the majority of cases this process is performed by a control unit of the coating system.



Hint

On each interruption to work, the spray gun should be blown through (purged) and powder residue removed. In this way **powder deposits** and a **surge** the next time the spray gun is switched on can be largely avoided.

If you want to manually switch off the spray gun and are using a powder injector that is **not designed** for automatic purging, proceed as follows:

- The atomizing air **must** be left open so that **no powder** can enter the atomizing air ducts and the cascade space during purging. Switch off the powder feed and the high voltage generator.
- If you do not want to change the settings for the feed air and dosage air so that you can continue to coat using the same powder pattern, pull the powder injector out of the injector connection on the powder container. No more powder will be fed when the powder feed is switched back on.
- Switch the powder feed back on so that the spray gun is blown clear of powder.
- You can now switch off the powder feed.

4.3 Performing a color change

During a color change all parts carrying powder **must** be **thoroughly** cleaned of powder residue. In the following only the procedure for the powder spray gun is described.



Hint

During a color change, the nozzle system does not necessarily have to disassemble.





Caution

If the outer nut is not screwed on tightly up to the stop position, the colors may smear.

- Switch off the powder coating plant after automatic purging and secure it against inadvertent switch on.
- If you do not use automatic purging, flush the powder spray gun manually and clear any residues of powder before you shut down the plant.
 - Disconnect the powder hose from the spray gun.
 - Clear the spray gun using the air gun and clear any residues of powder.
 - Shut down the plant and secure it against inadvertent switch on.
- Before you commence to connect the powder hose again, all parts carrying powder **must** be **thoroughly** cleaned.

The spray gun is ready for use again.

5. Maintenance and cleaning

 WARNING	 CAUTION
<p>WHEN CLEANING THE ELECTROSTATIC SYSTEM, THESE SAFETY PROCEDURES MUST BE FOLLOWED. FAILURE TO FOLLOW THESE PROCEDURES MAY RESULT IN AN EXPLOSION/FIRE.</p> <ul style="list-style-type: none"> • Turn power pack to the "OFF" position and unplug from power source before starting to clean. • Exhaust and fresh air introduction must be maintained during the clean up operation. • Keep cleaning materials in approved safety containers. • All personnel and cleaning equipment, including container used in cleaning operation, must be grounded. • DO NOT turn on the POWER PACK until the cleaning operation has been completed, all cleaning materials have been removed from spray area, and spray area is free of any mixtures of powder and air produced by the cleaning operation. • If defects in the equipment are found, DO NOT use until repairs are completed. 	<ul style="list-style-type: none"> • Clean equipment immediately after use. • NEVER IMMERSE SPRAY GUN OR PARTS OF IT IN ANY FLUID AT ANY TIME. • Be sure the Power Pack is turned off and unplugged from the power source. <p style="text-align: center;">NOTE</p> <ul style="list-style-type: none"> • The powder passages of the spray gun should be cleaned while cleaning the powder hose and powder pump, following instructions, provided with the powder pump (injector). (See powder injector operating manual) • Clean the spray tip by removing from spray gun, flushing with air and replacing on spray gun.

5.1 Replacing the spray gun

0401_.doc

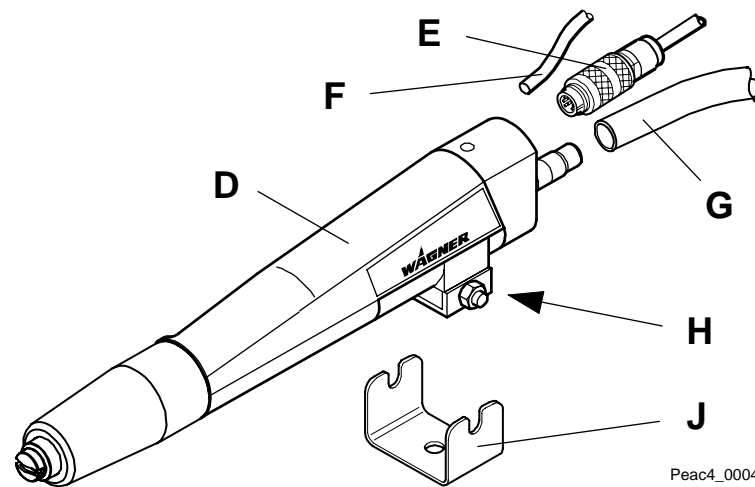
Before you commence the replacement of the spray gun any powder residue **must** be removed **thoroughly**.



Caution

Repair or replacement of the spray gun or parts of the spray gun are only allowed to be performed outside the hazard area and in a suitable place by specialist personnel!

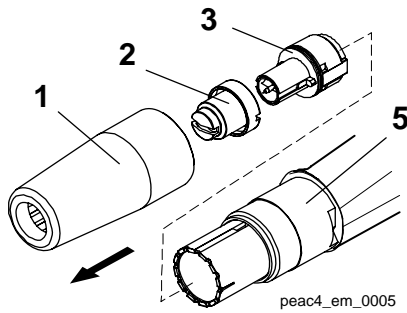
The wearing parts in the spray gun, marked in the spare parts list with *, must be regularly checked and, if necessary replaced.



- Switch off the plant and/or the high voltage generator.
- Disconnect the electrical cable **E** from the spray gun **D**.
- Disconnect the hoses for powder feed **G** and atomizing air **F** from the spray gun **D**.
- Undo the locking nuts **H** and disconnect the spray gun **D** from the support **J**.
- Replace the spray gun with a new gun and fit this in the reverse order of removal.

5.2 Cleaning the spray gun and replacing the wearing parts

0412_Verschleissteile.doc



- Unscrew the outer nut **1** from the spray gun housing **5**.
- Pull the fan spray nozzle **2** off the electrode holder **3**.
- Carefully pull the electrode holder **3** out of the spray gun housing **5**.



Caution

When pulling out and inserting the electrode holder, ensure that the insert is not damaged!

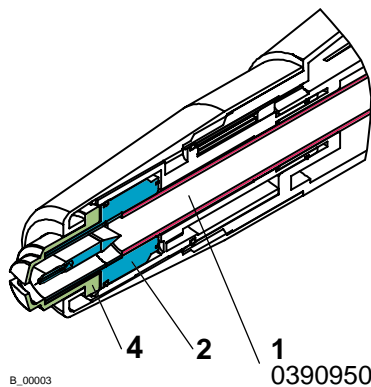
- Remove powder residue from the parts removed and from the spray gun.



Caution

Never place the spray gun or parts of the spray gun in cleaning agent!

5.3 C4 Enamel Powder tube assembly instructions

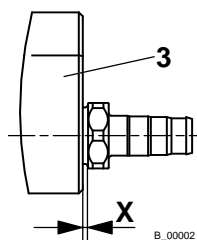


B_00003

0390950

Assembly steps:

- Mount nozzle system.
- Insert the powder tube (1) into the cover plate (3) and screw it into place until the fan spray nozzle (4) is difficult to turn.
- The stop on the powder tube (1) on the electrode holder (2) limits the screw-in depth.



B_00002

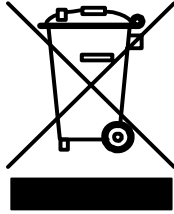
Please note:

The distance between the hose nipple and the cover plate (3) is determined by the screw-in depth of the nozzle body.

The measurement X results from the installation.

5.4 Disposal

04_Entsorgung_anlagen



Only for EU countries

Do not dispose of electric tools together with household waste material!

In observance of the European Directive 2002/96/EC on waste electrical and electronic equipment and implementation in accordance with national law, this product is not to be disposed of together with household waste material but must be recycled in an environmentally friendly way!

6. Rectification of malfunctions

05_Stoerung_C4.doc

Malfunction	Cause	Rectification
No electrostatic (e.g. no wrap around or no powder adhesion)	<ul style="list-style-type: none"> - Fault in the high voltage generator - Electrical cable from spray gun to control unit faulty - Cascade in spray gun faulty 	<ul style="list-style-type: none"> - Contact Wagner Service - Replace electrical cable - Contact Wagner Service
Poor wrap around Back spray	<ul style="list-style-type: none"> - Inadequate or no ground 	<ul style="list-style-type: none"> - See chapter "Grounding"
Powder outlet uneven or inadequate	<ul style="list-style-type: none"> - Soiling - Powder sintering - Feed device soiled - Feed air / dosage air ratio incorrect - Wear on powder injector nozzle 	<ul style="list-style-type: none"> - Blow through parts carrying powder - Clean parts carrying powder - See operating instructions for the related devices connected - Adjust at control module respective control unit - Replace worn parts in the powder injector 1.)
Spray pattern is uneven	<ul style="list-style-type: none"> - Parts of nozzle system worn 	<ul style="list-style-type: none"> - Replace worn parts

1.) You will find the wearing parts and spare parts in the operating instructions for the powder injector.

7. Warranty

08_.doc

What is covered by this warranty?

Faulty or defective parts are replaced according to our general delivery conditions.

Within the applicable warrant period, Wagner will repair or replace, at our option, defective parts without charge if such parts are returned with transportation charges prepaid to the nearest authorized service center. If Wagner is unable to repair this product so as to conform to this Limited Warranty after a reasonable number of attempts, Wagner will provide, at our option, either a replacement for this product or a full refund of the purchase price of this product.

These remedies are the sole and exclusive remedies available for breach of express and implied warranties.

What is not covered by this warranty?

This warranty does not cover any of the following damages or defects:

1. Damages or defects caused by use or installation of repair or replacement parts or accessories not manufactured by Wagner,
2. Damages or defects caused by repair performed by anyone other than a Wagner authorized service center, or
3. Damages or defects caused by or related to abrasion, corrosion, abuse, misuse, negligence, accident, normal wear, faulty installation or tampering in a manner which impairs normal operation.

Limitation of remedies:

IN NO CASE SHALL WAGNER BE LIABLE FOR ANY INCIDENTAL, SPECIAL OR CONSEQUENTIAL DAMAGES OR LOSS, INCLUDING TRANSPORTATION COSTS, WHETHER SUCH DAMAGES ARE BASED UPON A BREACH OF EXPRESS OR IMPLIED WARRANTIES, BREACH OF CONTRACT, NEGLIGENCE, STRICT TORT, OR ANY OTHER LEGAL THEORY.

Disclaimer of implied warranties:

THE FOREGOING WARRANTIES ARE IN LIEU OF ALL OTHER WARRANTIES, EXPRESS OR IMPLIED, INCLUDING BUT NOT LIMITED TO THE IMPLIED WARRANTIES OF MERCHANTABILITY AND FITNESS FOR A PARTICULAR PURPOSE.

No ability to transfer:

This warranty is extended to the original purchaser only and is not transferable.

Your rights under state law:

Some states do not allow limitations on how long an implied warranty lasts or the exclusion of incidental or consequential damages, so the above limitation and exclusion may not apply to you. This warranty gives you specific legal rights; you may also be entitled to other rights, which vary from state to state.

8. Scope of delivery and spare parts lists

8.1 How to order spare parts

0901_.doc

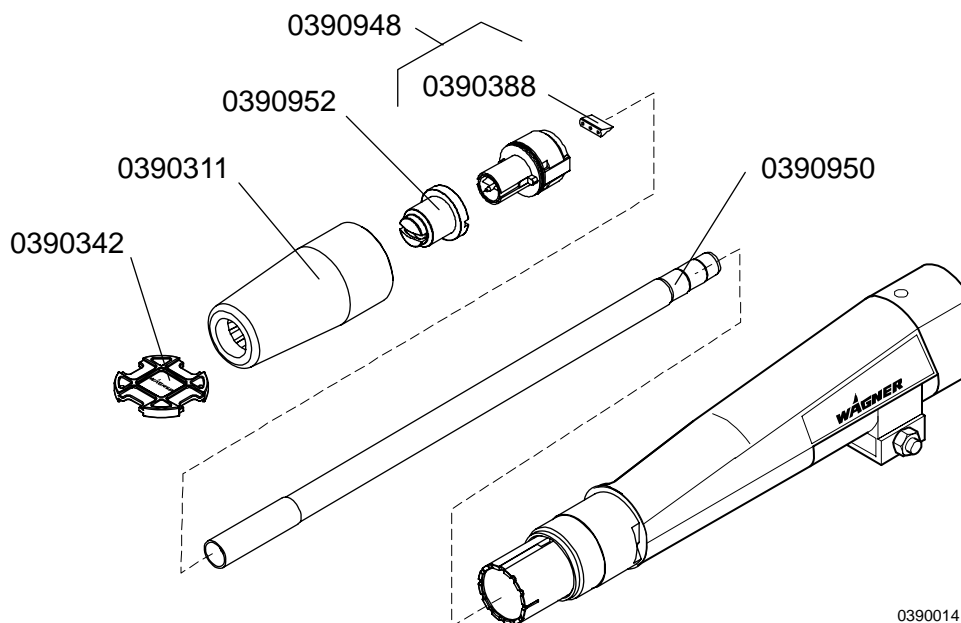
Faulty and unserviceable parts are replaced in accordance with our General Terms and Conditions of Delivery.

In order to be able to guarantee safe and smooth spare parts delivery, the following information is necessary:

- **Invoicing address**
- **Delivery address**
- **Name of contact persons for check back**
- **Type of delivery**
- **Quantity ordered, article number and designation**

Wearing parts are marked with *.

8.2 Scope of delivery and spare parts spray gun PEA-C4-HiCoat (Enamel)



0390014

0390014

Article No.	Description
0390011	Spray gun PEA-C4-HiCoat Enamel
0390311	Outer nut
0390952 *	Fan spray nozzle C4 Enamel
0390948 *	Electrode holder C4 Enamel ET **
0390388 *	Protective wedge C4 Enamell
0390950 *	Powder tube C4 Enamel ET (PEA-C4)
0390342	Adjustment tool (for fan spray nozzles)

* Wearing part

** only available as a set

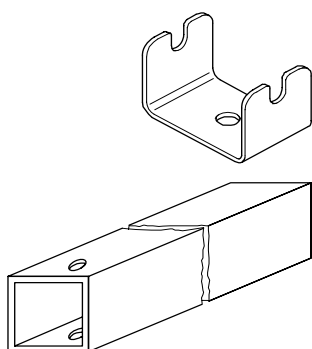
9. Accessories

9.1 Electrical cables and hoses

Article No.	Description	Application
0351216	Electrical cable 5 m	For connecting the spray gun to the high voltage generator
0351217	Electrical cable 10 m	
0351215	Electrical cable 20 m	
9982079	Hose 6x1	Connection of the atomizing air

9.2 Spray gun mounting and fastening

10_0002



Article No.	Designation
0351347	Hanger: For fastening the spray gun
0260215	Spray gun mount: For fastening the hanger to the reciprocator

9.3 Fan spray nozzle

10_0013



Article No.	Designation
0390952 *	Fan spray nozzle C4 Enamel

* Wearing part



ADDRESSES

Germany

J. WAGNER GmbH
Otto-Lilienthal-Str. 18
D-88677 Markdorf

Phone +49(0)7544/505-0
Fax +49(0)7544/505-200

Switzerland

J. WAGNER AG
Postfach 109
Industriestrasse 22
CH-9450 Altstätten

Phone +41(0)71/7572211
Fax +41(0)71/7572222

Austria

J. WAGNER GmbH
Oberflächentechnik
Lohnergasse 1
A-1210 Wien

Phone +43(0)1/2707781
Fax +43(0)1/2788430

Netherlands

Wagner Systemen Nederland B.V.
Proostwetering 105 C
NL-3543 AC UTRECHT

Phone +31(0)30/2410688
Fax +31(0)30/2410765

Belgium

Estee Industries
Leenbeekstraat 9
B-9770 Kruishoutem

Phone +32(0)9/3885410
Fax +32(0)9/3885440

Denmark

WAGNER Powder Systems Scvandinavia
Juupajokivej 8
DK-8850 Bjerringbro

Phone +45 7023 2052
Fax +45 8668 2052

Sweden

WAGNER Powder Systems Scandinavia AB
Hedenstorpsvägen 4
Sverige - 55593 Jönköping

Phone +46(0)36/341590
Fax +46(0)36/368580

Great Britain

WAGNER Spraytech (UK) Ltd.
Unit 3 Haslemere Way
Tramway Industrial Estate
UK-Banbury, Oxon OX 16 8TY

Phone +44-1295-265353
Fax +44-1295-269861

USA

WAGNER Systems Inc.
175 Della Court
Carol Stream, IL 60188

Phone +1(0)630/7848900
Fax +1(0)630/7848970

Japan

WAGNER- HOSOKAWA Micron Ltd.
No. 9, 1-Chome
Shodal Tajka, Hirakata-Shi
Osaka 673-1132

Phone +81(0)728/566751
Fax +81(0)728/573722

China

WAGNER SPRAYTECH SHANGHAI CO LTD.
4th Flr, No. 395 Jiangchangxi Road
Shibei Industrial Zone
Shanghai, 200436

Phone +86(0)2166521858
Fax +86(0)2166529819

France

J. Wagner France SARL
B.P. 75, 5, Avenue du 1er Mai
F-91122 Palaiseau-Cédex

Phone +33(0)825/011111
Fax +33(0)1/69817257

Italy

WAGNER Itep S.p.A.
Via Santa Vecchia, 109
I-22049 Valmadrera - LC

Phone +39/0341/212211
Fax +39/0341/210200

Spain

WAGNER Spraytech Iberia S.A.
P.O.Boc, 132, Crtra. N-340, Km. 1245,4
E-08750 Molins de Rei (Barcelona)

Phone +34(0)93/6800028
Fax +34(0)93/6800555